

CHANGLIN ZL50H SINOMACH-HI International Equipment Co.,Ltd.

Optional Attachment



额定功率(Rated Power):162kW@2200rpm
 操作重量(Operating Weight):17200kg 额定斗容(Rated Bucket Capacity):3.0m³



- Equipped with reliable Cummins engine or ShangChai engine.
- 3 forward & 3 reverse power shift transmission.
- Combined seal cylinder obtains high seal performance and more reliability.





柴油发动机 Diesel Engine

型号.....广西康明斯 6LTAA 9.3 220/上柴 SC11CB220G2B1
 Model.....Cummins 6LTAA 9.3 220/ShangChai SC11CB220G2B1
 型式.....直喷, 增压中冷/直喷, 增压, 水冷
 Type.....Direct injection. Turbocharged non-aftercooled
 Direct injection .Turbocharge. Water cooling
 额定功率 Rated Power.....162kW
 额定转速 Rated Speed.....2200rpm



变速系统 Transmission System

变矩器型式.....三元件单级
 Torque converter type.....3-elements.single stage
 冷却方式.....油冷压力循环式
 Cooling mode.....Oil cooling pressure circulating
 变速箱型式.....动力换挡, 圆柱直齿长啮合
 Transmission type.....Heavy duty power shift transmission
 档位 (前进/后退).....前三后三
 Shifts(Forward/Backward).....F3/R3
 行驶速度(km/h) Traveling speed

	I	II	III
前进 Forward	6.8	10.8	32
后退 Backward	8	14.3	34.1



驱动桥 Axles

主传动形式.....单级螺旋锥齿轮
 Type of main.....Reducerspiral bevel gear, single stage
 最大牵引力 Max. drawing force.....160kN
 主传动速比 Gear ratio of main drive.....4.625
 轮边减速比 Gear ratio of hub reduction.....4.9286
 最大爬坡能力 Max. gradient capacity.....30°
 4轮驱动 Four Wheel Drive



转向系统 Steering System

型式.....中间铰接, 全液压转向
 Type.....Middle articulated frame. Full-hydraulic Steering
 转向角 Steering angle.....±38°
 最小转弯半径 Min.turning radius.....6192mm
 系统压力 System pressure.....16MPa
 发动机额定转速时的流量.....176L/min
 Flow rate at engine rated speed.....176L/min
 转向油缸数-缸径×行程.....2-φ 90×435mm
 No.of cylinders-Bore×Stroke.....2-φ 90×435mm



轮胎 Tyre

轮胎规格 Tyre size.....23.5-25-16PR



工作装置 Working Equipment

单摇臂高支点优化设计的工作装置, 自动放平作为选装件。
 Single swing arm high fulcrum working equipment, Automatic leveling device as optional configuration.
 最大掘起力 Max.breakout force.....170kN
 卸载高度 Dumping clearance.....3136mm
 卸载距离 Dumping reach.....1121mm



工作液压系统 Working Hydraulic System

工作油泵型号 Model of oil pump.....JHP 3100A
 系统压力 System pressure.....180(kgf/cm²)
 多路阀型号 Model of Muti-way directional valve
YGDF32 II -YL18
 先导供油阀 Pilot supply valveDGf-00
 先导阀型号 Pilot valve单手柄先导阀DXS-00
 举升油缸尺寸(D*L)Dimension of lifting cylinder
Φ160*90*810(mm)
 翻斗油缸尺寸(D*L)Dimension of tilting cylinder
Φ180*90*563(mm)



制动系统 Brake System

行车制动.....钳盘式制动器, 气顶液四轮制动
 Service Brake.....Caplier disc brake, Air over oil activate 4 wheel brake
 制动气压 Air pressure.....6-7.5(kgf/cm²)
 停车制动形式手制动, 软轴操纵鼓式制动
 Type of parking brakeHand brake, Flexible shaft control clamp brake



油量 Refill Capacity

燃油箱 Fuel tank.....280L
 发动机曲轴箱 Engine crank case.....24L
 双变系统 T/C and T/M45L
 液压系统 Hydraulic system.....230L
 前后桥 F/R axles18/18L



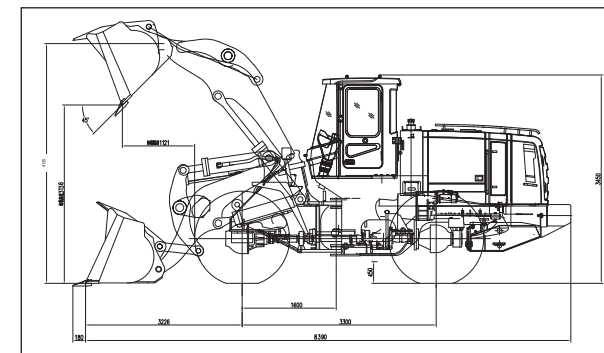
驾驶室 Cabin

Vibration-absorbed humanistic cabin with adjustable steering wheel and seat, and streamline dashboard provide low noise, comfortable operation and wide eyeshot.

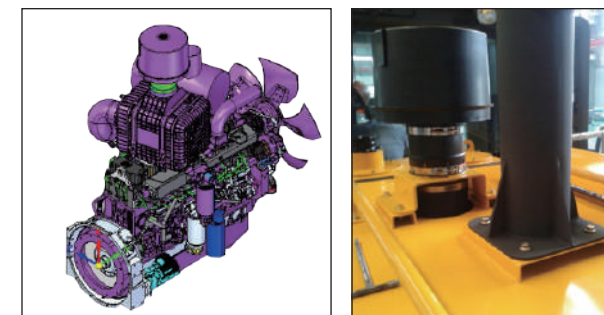


尺寸 Dimensions

轴距 Wheel base3300mm
 额定载重量 Rated load5000kg
 最大卸载高度 Max. dump clearance.....3136mm
 卸载距离 Dump reach.....1121mm

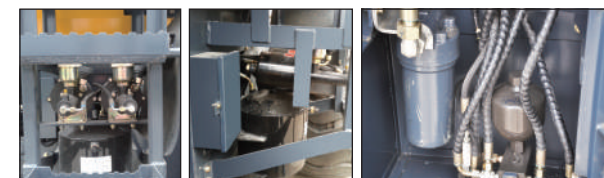


Best Power Performance



- Equipped with Cummins 6LTAA9.3 220/Shangchai SC11C-B220G2B1 engine with strong power, low consumption and good performance.
- The swirl type prefilter provides good filtering effect and it is fixed hierarchically with high reliability.
- The tail pipe has a large caliber design to reduce the exhaust back pressure and it is also fixed hierarchically.
- The added baffle on the rear of diesel tank is fixed on the counterweight to prevent the damage from accidental collision.

Easy maintence

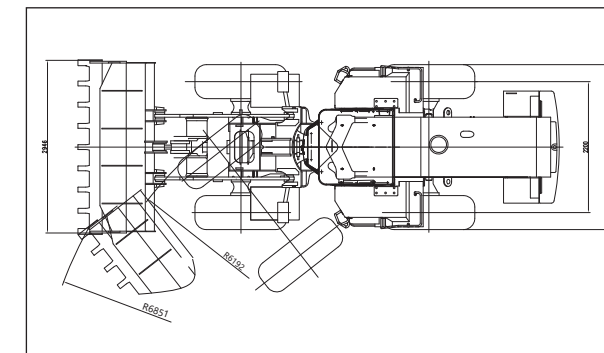


- The booster pump is equipped with filter element which greatly extends the service life
- The air reservoir is placed vertically to reduce the moisture in the brake system

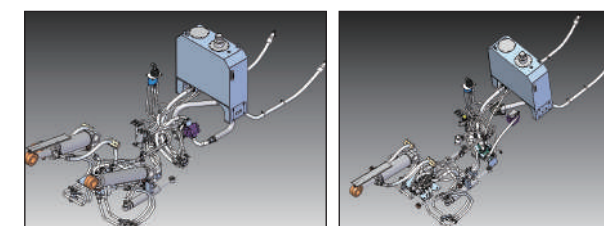
Comfortable Cabin



- Cabin featured luxury interior decoration and beautiful appearance and Excellent visibility all around.
- Panel will display warning lights and sound audible alarms
- Front,Rear windshield wipers.
- Easy entry and exit.
- With Air condition.

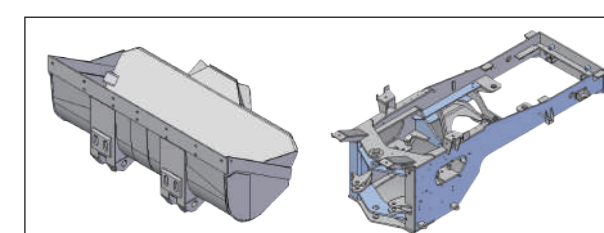


High Efficiency Hydraulic System



- The hydraulic system is labeled as a pilot system.
- The pilot system adopts the accumulator scheme to reduce the power loss of the system.
- The pilot accumulator is installed in the right auxiliary box for maintenance.
- Selecting the distribution system, the configuration switch to the limiter, reducing the system shock.
- The flow amplification valve is positioned in the center of the frame to facilitate maintenance.

Optimized bucket and chassis



- The optimized bucket has improved the full bucket rate. And there is a backplane added to the bucket rear to prevent the material spilling with teeth configuration and flat plate edge.
- The design of chassis has been upgraded to make lighter weight but bigger load bearing.



Wheel Loader Motor Grader Excavator Backhoe Loader Vibratory Roller Bulldozer

Construction Machinery

The specifications and pictures are subject to change without any notice.